

ALMARINI



http://www.almarianni.com
info@almarianni.com
+371 29295267 +371 29295267
Rīga, Bīķernieku iela 226 - 31,
LV-1079

Company type
Registration Number
Industry

Turnover (EUR)
Certificates

Limited responsibility company
40103522975
Manufacture of cocoa, chocolate
and sugar confectionery (10.82)
258917.00

AL MARI ANNI | PUMPKIN IN WHITE CHOCOLATE

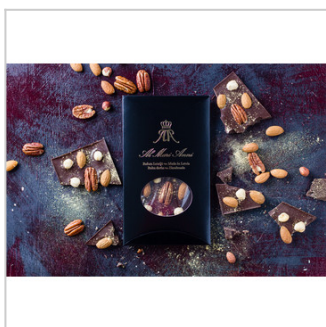


Product group
Confectionery & Cocoa preparations
Product subgroup
Chocolate and other food preparations
containing cocoa,
Fruits/berries/nuts in chocolate
Product code
1806
Product line

Product weight NET 100 Gram (g)
Product weight GROSS 118 Gram (g)
Alcohol % by volume 0
Storage terms (days) 365
Storage temperature min (C) 13
Storage temperature max (C) 23
Storage conditions Dry and cool place
Kind of packaging Packaging from composite
materials
Units per box 10



AL MARI ANNI | DARK AND WHITE CHOCOLATE MIX WITH HANDPICKED PECANS, ALMONDS, HAZELNUTS AND PUMPKIN SEEDS



Product group
Confectionery & Cocoa preparations
Product subgroup
Chocolate and other food preparations
containing cocoa,
Chocolate bars and slabs
Product code
1806
Product line

Product weight NET 80 Gram (g)
Product weight GROSS 108 Gram (g)
Alcohol % by volume 0
Storage terms (days) 230
Storage temperature min (C) 13
Storage temperature max (C) 23
Storage conditions Dry and cool place
Kind of packaging Packaging from composite
materials
Units per box 20



AL MARI ANNI | DARK CHOCOLATE WITH DRIED CHERRIES AND EXQUISITE GOLD DUSTING

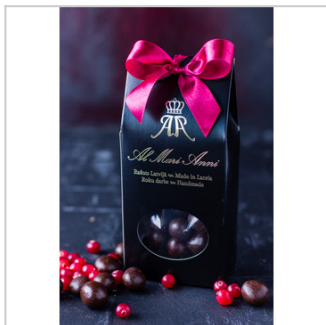


Product group
Confectionery & Cocoa preparations
Product subgroup
Chocolate and other food preparations
containing cocoa,
Chocolate bars and slabs
Product code
1806
Product line

Product weight NET 80 Gram (g)
Product weight GROSS 108 Gram (g)
Alcohol % by volume 0
Storage terms (days) 270
Storage temperature min (C) 13
Storage temperature max (C) 23
Storage conditions Dry and cool place
Kind of packaging Packaging from composite materials
Units per box 20



AL MARI ANNI | CRANBERRY IN DARK CHOCOLATE

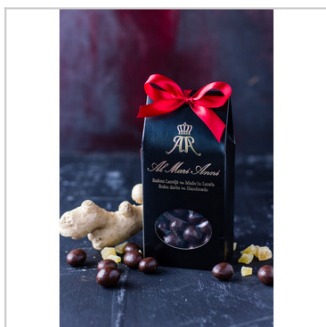


Product group
Confectionery & Cocoa preparations
Product subgroup
Chocolate and other food preparations
containing cocoa,
Fruits/berries/nuts in chocolate
Product code
1806
Product line

Product weight NET 100 Gram (g)
Product weight GROSS 118 Gram (g)
Alcohol % by volume 0
Storage terms (days) 365
Storage temperature min (C) 13
Storage temperature max (C) 23
Storage conditions Dry and cool place
Kind of packaging Packaging from composite materials



AL MARI ANNI | CANDIED GINGER IN DARK CHOCOLATE

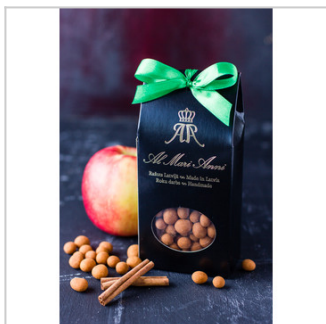


Product group
Confectionery & Cocoa preparations
Product subgroup
Chocolate and other food preparations
containing cocoa,
Fruits/berries/nuts in chocolate
Product code
1806
Product line

Product weight NET 100 Gram (g)
Product weight GROSS 118 Gram (g)
Alcohol % by volume 0
Storage terms (days) 365
Storage temperature min (C) 13
Storage temperature max (C) 23
Storage conditions Dry and cool place
Kind of packaging Packaging from composite materials
Units per box 10



AL MARI ANNI | APPLE IN WHITE CHOCOLATE COVERED WITH CINNAMON



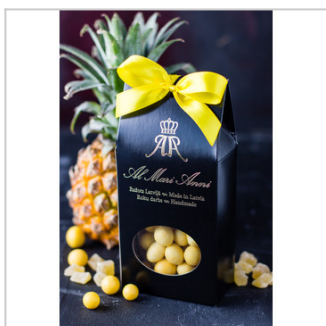
Product group
Confectionery & Cocoa preparations
Product subgroup
Chocolate and other food preparations
containing cocoa,
Fruits/berries/nuts in chocolate
Product code
1806
Product line

Product weight NET 100 Gram (g)
Product weight GROSS 118 Gram (g)
Alcohol % by volume 0
Storage terms (days) 365
Storage temperature min (C) 13
Storage temperature max (C) 23
Storage conditions Dry and cool place
Kind of packaging Packaging from composite materials

Units per box 10



AL MARI ANNI | PINEAPPLE IN WHITE CHOCOLATE



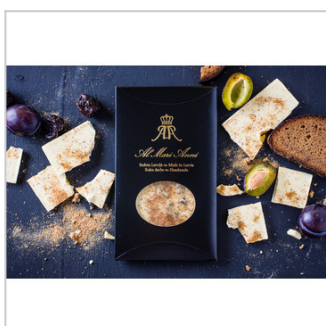
Product group
Confectionery & Cocoa preparations
Product subgroup
Chocolate and other food preparations
containing cocoa,
Fruits/berries/nuts in chocolate
Product code
1806
Product line

Product weight NET 100 Gram (g)
Product weight GROSS 118 Gram (g)
Alcohol % by volume 0
Storage terms (days) 365
Storage temperature min (C) 13
Storage temperature max (C) 23
Storage conditions Dry and cool place
Kind of packaging Packaging from composite materials

Units per box 10



AL MARI ANNI | WHITE CHOCOLATE WITH PRUNES MIXED WITH LATVIAN RYE BREAD



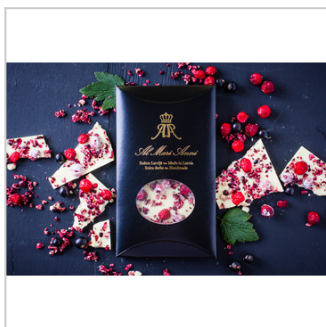
Product group
Confectionery & Cocoa preparations
Product subgroup
Chocolate and other food preparations
containing cocoa,
Chocolate bars and slabs
Product code
1806
Product line

Product weight NET 80 Gram (g)
Product weight GROSS 108 Gram (g)
Alcohol % by volume 0
Storage terms (days) 270
Storage temperature min (C) 13
Storage temperature max (C) 23
Storage conditions Dry and cool place
Kind of packaging Packaging from composite materials

Units per box 20



AL MARI ANNI | WHITE CHOCOLATE WITH BLACK CURRANT, CRANBERRIES, SPRINKLED WITH BLACK CURRANT FLAKES



Product group
Confectionery & Cocoa preparations
Product subgroup
Chocolate and other food preparations
containing cocoa,
Chocolate bars and slabs
Product code
1806
Product line

Product weight NET 80 Gram (g)
Product weight GROSS 108 Gram (g)
Alcohol % by volume 0
Storage terms (days) 270
Storage temperature min (C) 13
Storage temperature max (C) 23
Storage conditions Dry and cool place
Kind of packaging Packaging from composite
materials
Units per box 20



AL MARI ANNI | MILK CHOCOLATE WITH FREEZE-DRIED STRAWBERRIES, PISTACHIOS AND VIOLETS



Product group
Confectionery & Cocoa preparations
Product subgroup
Chocolate and other food preparations
containing cocoa,
Chocolate bars and slabs
Product code
1806
Product line

Product weight NET 80 Gram (g)
Product weight GROSS 108 Gram (g)
Alcohol % by volume 0
Storage terms (days) 270
Storage temperature min (C) 13
Storage temperature max (C) 23
Storage conditions Dry and cool place
Kind of packaging Packaging from composite
materials
Units per box 20



AL MARI ANNI | WHITE CHOCOLATE WITH DRIED APRICOTS, ROASTED ALMONDS AND LEMON ZEST



Product group
Confectionery & Cocoa preparations
Product subgroup
Chocolate and other food preparations
containing cocoa,
Chocolate bars and slabs
Product code
1806
Product line

Product weight NET 80 Gram (g)
Product weight GROSS 108 Gram (g)
Alcohol % by volume 0
Storage terms (days) 270
Storage temperature min (C) 13
Storage temperature max (C) 23
Storage conditions Dry and cool place
Kind of packaging Packaging from composite
materials
Units per box 20



AL MARI ANNI | DARK CHOCOLATE WITH HANDPICKED PECANS, HAZELNUTS, ALMONDS AND EDIBLE GOLD

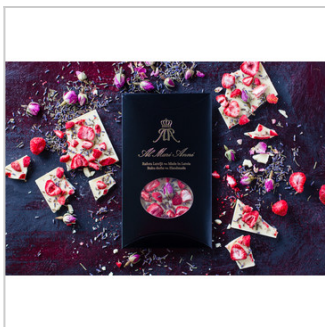


Product group
Confectionery & Cocoa preparations
Product subgroup
Chocolate and other food preparations
containing cocoa,
Chocolate bars and slabs
Product code
1806
Product line

Product weight NET 80 Gram (g)
Product weight GROSS 108 Gram (g)
Alcohol % by volume 0
Storage terms (days) 230
Storage temperature min (C) 13
Storage temperature max (C) 23
Storage conditions Dry and cool place
Kind of packaging Packaging from composite materials
Units per box 20



AL MARI ANNI | WHITE CHOCOLATE WITH FREEZE-DRIED STRAWBERRIES, PRECIOUS FLOWERS OF LAVENDER AND ROSES

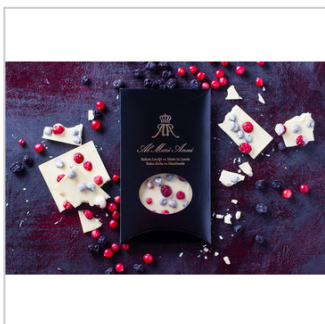


Product group
Confectionery & Cocoa preparations
Product subgroup
Chocolate and other food preparations
containing cocoa,
Chocolate bars and slabs
Product code
1806
Product line

Product weight NET 80 Gram (g)
Product weight GROSS 108 Gram (g)
Alcohol % by volume 0
Storage terms (days) 270
Storage temperature min (C) 13
Storage temperature max (C) 23
Storage conditions Dry and cool place
Kind of packaging Packaging from composite materials
Units per box 20



AL MARI ANNI | WHITE CHOCOLATE WITH JUICY GARDEN CRANBERRIES AND BLACK CURRANT



Product group
Confectionery & Cocoa preparations
Product subgroup
Chocolate and other food preparations
containing cocoa,
Chocolate bars and slabs
Product code
1806
Product line

Product weight NET 80 Gram (g)
Product weight GROSS 108 Gram (g)
Alcohol % by volume 0
Storage terms (days) 270
Storage temperature min (C) 13
Storage temperature max (C) 23
Storage conditions Dry and cool place
Kind of packaging Packaging from composite materials
Units per box 20



AL MARI ANNI | DARK CHOCOLATE WITH FLAVOURED LEMON ZEST AND PECULIAR PATTERNS OF WHITE CHOCOLATE



Product group
Confectionery & Cocoa preparations
Product subgroup
Chocolate and other food preparations
containing cocoa,
Chocolate bars and slabs
Product code
1806
Product line

Product weight NET 13 Gram (g)
Product weight GROSS 23 Gram (g)
Alcohol % by volume 0
Storage terms (days) 270
Storage temperature min (C) 13
Storage temperature max (C) 23
Storage conditions Dry and cool place
Kind of packaging Packaging from composite materials
Units per box 20



AL MARI ANNI | DARK CHOCOLATE WITH SEA SALT, PINK PEPPER AND HOT CHILLI PEPPER

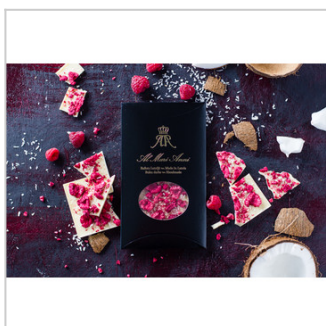


Product group
Confectionery & Cocoa preparations
Product subgroup
Chocolate and other food preparations
containing cocoa,
Chocolate bars and slabs
Product code
1806
Product line

Product weight NET 80 Gram (g)
Product weight GROSS 108 Gram (g)
Alcohol % by volume 0
Storage terms (days) 270
Storage temperature min (C) 13
Storage temperature max (C) 23
Storage conditions Dry and cool place
Kind of packaging Packaging from composite materials
Units per box 20



AL MARI ANNI | WHITE CHOCOLATE WITH FREEZE-DRIED RASPBERRIES AND DELICATE COCONUT FLAKES



Product group
Confectionery & Cocoa preparations
Product subgroup
Chocolate and other food preparations
containing cocoa,
Chocolate bars and slabs
Product code
1806
Product line

Product weight NET 80 Gram (g)
Product weight GROSS 108 Gram (g)
Alcohol % by volume 0
Storage terms (days) 270
Storage temperature min (C) 13
Storage temperature max (C) 23
Storage conditions Dry and cool place
Kind of packaging Packaging from composite materials
Units per box 20

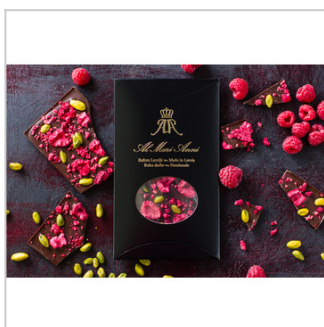
AL MARI ANNI | DARK CHOCOLATE WITH FREEZE-DRIED RASPBERRIES AND REFRESHING MINT



Product group
Confectionery & Cocoa preparations
Product subgroup
Chocolate and other food preparations
containing cocoa,
Chocolate bars and slabs
Product code
1806
Product line

Product weight NET 80 Gram (g)
Product weight GROSS 108 Gram (g)
Alcohol % by volume 0
Storage terms (days) 270
Storage temperature min (C) 13
Storage temperature max (C) 23
Storage conditions Dry and cool place
Kind of packaging Packaging from composite materials
Units per box 20

AL MARI ANNI | MILK CHOCOLATE WITH FREEZE-DRIED RASPBERRIES AND HANDPICKED PISTACHIOS



Product group
Confectionery & Cocoa preparations
Product subgroup
Chocolate and other food preparations
containing cocoa,
Chocolate bars and slabs
Product code
1806
Product line

Product weight NET 80 Gram (g)
Product weight GROSS 108 Gram (g)
Alcohol % by volume 0
Storage terms (days) 270
Storage temperature min (C) 13
Storage temperature max (C) 23
Storage conditions Dry and cool place
Kind of packaging Packaging from composite materials
Units per box 20

